



Quick Installation Guide

Dual-band Whole Home Mesh Wi-Fi 6 System MX3/EX3



Please read this guide before you start with the quick setup upon the first use. You can see the product name and model on the product label.

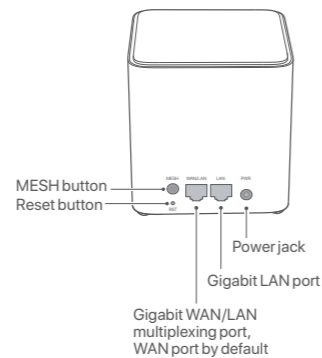
MX3 is used for illustration here unless otherwise specified. The actual product prevails.

This guide instructs how to install and connect the device. For more information such as the description of symbols displayed on relevant materials, please visit www.tendacn.com or scan the **Product Documents** QR code in this guide.

Package contents

- Mesh3X x1
- Power adapter x1
- Ethernet cable x1
- Quick installation guide x1

Appearance



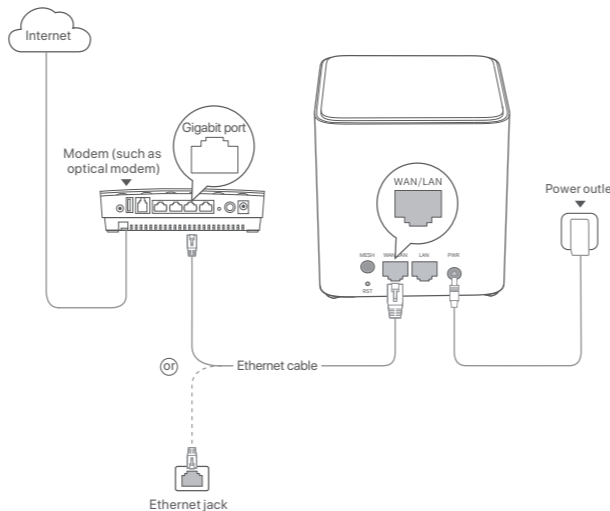
Button	Description
MESH	<p>MESH button.</p> <ul style="list-style-type: none"> - As a networking button: Press this button on this device for about 1 to 3 seconds. The LED indicator blinks green fast, which indicates the device is searching for another device to form a network. Within 2 minutes, press the MESH button of another device for 1 to 3 seconds to negotiate with this device. - As a de-networking button: Press this button for about 8 seconds and release it when the LED indicator blinks red fast. The node is restored to factory settings, and also removed from the network and no longer automatically joins in again. <p>Tips Do not hold down the MESH button for 8 seconds if unnecessary.</p>
RST	<p>Reset button.</p> <p>When the device completes startup, hold down this button using a needle-like item (such as a pin) for about 8 seconds, and then release it when the LED indicator blinks red fast. The device is reset successfully.</p>

Scenario1: Set up as your first nova node

1 Connect the node

Tips
If you do not use a modem for internet access, please skip steps 1 and 3.

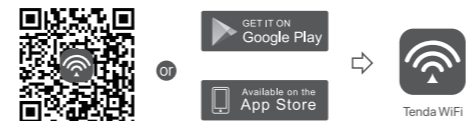
1. Power off your modem.
2. Use the included Ethernet cable to connect the **WAN/LAN** port to your modem or the Ethernet jack.
3. Power on your modem.
4. Power on the node, and wait until the LED indicator blinks green.



2 Connect the node to the internet

Method 1: Setup through Tenda WiFi App

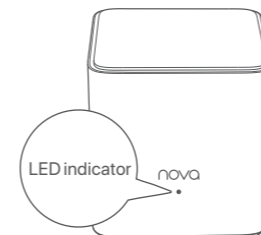
1. Download the **Tenda WiFi** App onto your mobile device by scanning the **QR** code or by searching for **Tenda WiFi** in **Google Play** or **App Store**. Then install the **Tenda WiFi** App.



2. Connect the mobile phone to the WiFi network of the node. The SSID and password can be found on the bottom label of the device.



3. Run the **Tenda WiFi** App and follow the onscreen instructions to connect the device to the internet. After the device is connected to the internet, its LED indicator lights solid green.

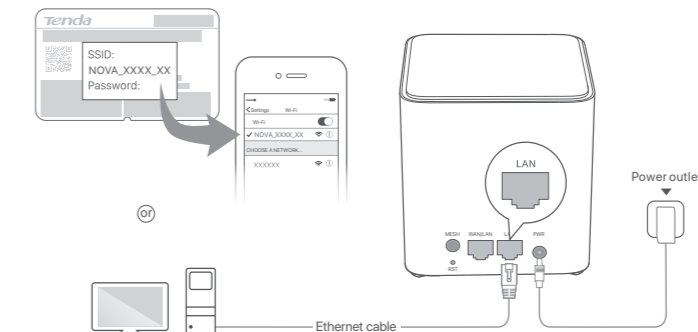


Done.

- To access the internet with:
 - Wired devices: Connect to the LAN port of your node.
 - Wireless devices: Connect to your WiFi network using the WiFi name and password you set.
- If you want to manage the network remotely, tap @ on the App home page and use your account to log in.

Method 2: Setup through web UI

1. Connect the client to the node.
 - Method 1: Connect the wireless client such as a mobile phone to the WiFi network of the node. The SSID and password can be found on the bottom label of the device.
 - Method 2: Use an Ethernet cable to connect the computer to the **LAN** port of the node.



2. Start a browser on the client and enter **tendawifi.com** in the address bar to access the web UI, and follow the onscreen instructions to connect the device to the internet.

Tips
If you cannot log in to the web UI, refer to **Q1** in **FAQ**.

Done.

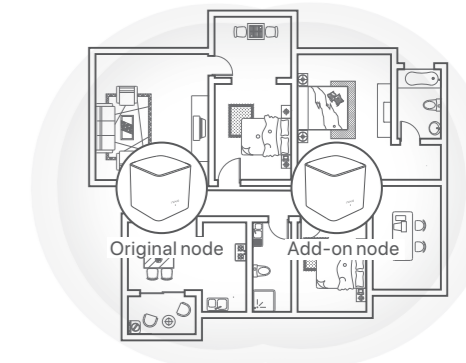
- To access the internet with:
 - Wired devices: Connect to the LAN port of your node.
 - Wireless devices: Connect to your WiFi network using the WiFi name and password you set.

Scenario2: Set up as an add-on nova node

1 Add the node to an existing network

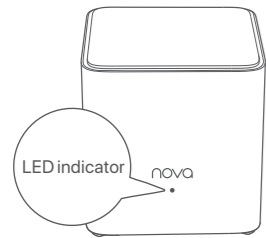
- Tips**
- Please ensure that the node has never been used. If not, reset it first.
 - Currently, the node can be networked with Tenda's Wi-Fi 6 routers that support the EasyMesh protocol.

1. Place the node in an elevated and open position within 3 meters from your existing nova.



2. Use the power adapter to connect the node to a power source. Its LED indicator should light solid green. Wait about 40 seconds. The node completes startup when its LED indicator blinks green slowly.
3. Press the **MESH** button of the node for about 1 to 3 seconds. The LED indicator blinks green fast. Within 2 minutes, press the **MESH** button of the node of the existing network for 1 to 3 seconds to negotiate with this node.

When the LED indicator of the node lights solid green, the networking is successful and the node becomes a secondary node in the network.



Relocate the node

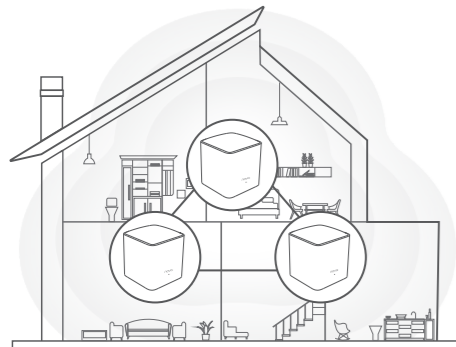
1. Refer to the following relocation tips to locate the node to a proper position:

- Ensure that the distance between any two nodes is less than 10 meters.
- Keep your nodes away from electronics with strong interference, such as microwave ovens, induction cookers, and refrigerators.
- Place the nodes in a high position with few obstacles.

2. Power on the node again till the LED indicator blinks green slowly.

Tips

If the LED indicator of node keeps blinking green slowly for more than 3 minutes, relocate the node and move it closer to the primary node.



3. Observe the LED indicator of the node until the LED indicator lights one of the following colors:

Solid green	Networking succeeds. Excellent connection quality.
Solid yellow	Networking succeeds. Fair connection quality.
Solid red	Networking succeeds. Poor connection quality.

4. If the node's LED indicator lights solid red, relocate it by repeating the preceding steps to get an optimal connection quality.

Done.

To access the internet with:

- Wired devices: Connect to the LAN ports of your nodes.

- Wireless devices: Connect to your WiFi network using the WiFi name and password of your existing nova WiFi network.

FAQ

Q1: I cannot log in to the web UI by visiting tendawifi.com. What should I do?

A1: Try the following solutions:

- If you are using a wireless device, such as a smartphone:
 - Ensure that it is connected to the WiFi network of the node.
 - Ensure that the cellular network (mobile data) of the client is disabled.
- If you are using a wired device, such as a computer:
 - Ensure that **tendawifi.com** is entered correctly in the address bar, rather than the search bar of the web browser.
 - Ensure that the computer is connected to the LAN port of the node properly using an Ethernet cable.
 - Ensure that the computer is set to **obtain an IP address automatically and obtain DNS server address automatically.**

If the problem persists, please reset the node by referring to **Q2** and try again.

Q2: How to restore my device to factory settings?

A2: When your device is working properly, hold down the **RST** button of your device using a needle-like item (such as a pin) for about 8 seconds, and release it when the LED indicator blinks red fast. When the LED indicator lights solid green, your device is reset successfully.

Q3: The device failed to be detected by the Tenda WiFi app upon my first time using the device. What should I do?

A3: Try the following solutions:

1. Ensure that your mobile phone is connected to the default WiFi network of the device.
2. Ensure that the network permission of **Tenda WiFi** app is enabled, you can tap **Settings** > **Tenda WiFi** to enable it.

If the problem persists, please reset the node and try again.

Q4: When I use the node as a single router, I cannot access the internet after the configuration. What should I do?

A4: Try the following solutions:

- Check whether the WAN port of the node is connected to a modem or Ethernet jack properly.
- Log in to the web UI of the node and navigate to the Internet Settings page. Follow the instructions on the page to solve the problem.

If the problem persists, try the following solutions:

- For WiFi-enabled devices:
 - Check whether your WiFi-enabled devices are connected to the WiFi network of the node.
 - Visit **tendawifi.com** to log in to the web UI and change your WiFi name and WiFi password on the WiFi Settings page. Then try again.
- For wired devices:
 - Check whether your wired devices are connected to a LAN port properly.
 - Check whether wired devices are set to obtain an IP address automatically and obtain DNS server address automatically.

LED indicator status

After the device is powered on for about 40 seconds, the system completes startup. The status of the LED indicator is shown in the following table.

LED indicator status	Description
Solid green	Connected to the internet.
Solid yellow	Networking succeeds. Fair connection quality.
Solid red	Networking succeeds. Poor connection quality.
Blinking green slowly	Waiting to connect to other nodes.
Blinking green fast	Networking by MESH button.
Blinking red slowly	Failed to connect to the internet.

Get support and services

Scan the **Product Documents** QR code to get related documents, such as the datasheet and user guide.

* The product model can be found on the label of the device.



Product Documents
(such as datasheet and user guide)

Wall Mounting

This device can be installed on the wall with two screws and two expansion bolts. The recommended wall mounting tools are as follows:

[Expansion bolt] Outer diameter: 6.0mm; Length: 26.4mm
[Screws] PA3*14mm; Head diameter: 5.2mm



CE Mark Warning

This is a Class B product. In a domestic environment, this product may cause radio interference, in which case the user may be required to take adequate measures.

Operations in the 5.15-5.25GHz band are restricted to indoor use only.

This equipment should be installed and operated with a minimum distance 20cm between the device and your body.

The mains plug is used as disconnect device, the disconnect device shall remain readily operable.

NOTE: (1) The manufacturer is not responsible for any radio or TV interference caused by unauthorized modifications to this equipment. (2) To avoid unnecessary radiation interference, it is recommended to use a shielded RJ45 cable.

Declaration of Conformity

Hereby, SHENZHEN TENDA TECHNOLOGY CO., LTD. declares that the device is in compliance with Directive 2014/53/EU.

The full text of the EU declaration of conformity is available at the following internet address:

<https://www.tendacn.com/download/list-9.html>

Operating Frequency:

2.4 GHz: EU/2412-2472 MHz

5 GHz: EU/5150-5250 MHz

EIRP Power (Max.):

2.4 GHz: <20 dBm

5 GHz: <23 dBm

Software Version: V16.03.31.X (Mesh3X, MX3, EX3)



FCC Statement

This equipment has been tested and found to comply with the limits for a Class B digital device, pursuant to Part 15 of the FCC Rules. These limits are designed to provide reasonable protection against harmful interference in a residential installation.

This equipment generates, uses and can radiate radio frequency energy and, if not installed and used in accordance with the instructions, may cause harmful interference to radio communications. However, there is no guarantee that interference will not occur in a particular installation. If this equipment does cause harmful interference to radio or television reception, which can be determined by turning the equipment off and on, the user is encouraged to try to correct the interference by one or more of the following measures:

- Reorient or relocate the receiving antenna.
- Increase the separation between the equipment and receiver.
- Connect the equipment into an outlet on a circuit different from that to which the receiver is connected.
- Consult the dealer or an experienced radio/TV technician for help.

The device is for indoor usage only.

Operation is subject to the following two conditions: (1) this device may not cause harmful interference, and (2) this device must accept any interference received, including interference that may cause undesired operation.

Radiation Exposure Statement

This device complies with FCC radiation exposure limits set forth for an uncontrolled environment and it also complies with Part 15 of the FCC RF Rules.

This equipment should be installed and operated with minimum distance 20cm between the device and your body.

Caution:

Any changes or modifications not expressly approved by the party responsible for compliance could void the user's authority to operate this equipment.

This transmitter must not be co-located or operating in conjunction with any other antenna or transmitter.

Operating frequency: 2412-2462 MHz, 5150-5250 MHz, 5725-5850 MHz

NOTE: (1) The manufacturer is not responsible for any radio or TV interference caused by unauthorized modifications to this equipment. (2) To avoid unnecessary radiation interference, it is recommended to use a shielded RJ45 cable.



Caution:

Adapter Model: BN073-A12012E/BN073-A12012B/BN073-A12012U/BN036-A12012D

Input: 100 - 240V AC, 50/60Hz, 0.4A

Output: 12V DC, 1.0A

Manufacturer: SHENZHEN HEWEISHUN NETWORK TECHNOLOGY CO., LTD.

⎓ : DC Voltage



RECYCLING

This product bears the selective sorting symbol for Waste electrical and electronic equipment (WEEE). This means that this product must be handled pursuant to European directive 2012/19/EU in order to be recycled or dismantled to minimize its impact on the environment.

User has the choice to give his product to a competent recycling organization or to the retailer when he buys a new electrical or electronic equipment.

For EU/EFTA, this product can be used in the following countries:

	BE	BG	CZ	DK	DE	EE	IE	EL	ES	FR	HR	IT	CY	LV
	LT	LU	HU	MT	NL	AT	PL	PT	RO	SI	SK	FI	SE	UK(NI)

Safety Precautions

Before performing an operation, read the operation instructions and precautions to be taken, and follow them to prevent accidents. The warning and danger items in other documents do not cover all the safety precautions that must be followed. They are only supplementary information, and the installation and maintenance personnel need to understand the basic safety precautions to be taken.

- For desktop mounting, the device must be horizontally mounted for safe use.

- For wall mounting, the device is only suitable for mounting at heights ≤ 2 m.

- Do not use the device in a place where wireless devices are not allowed.

- Please use the included power adapter.

- The mains plug is used as the disconnect device, and shall remain readily operable.

- The power socket shall be installed near the device and easily accessible.

- Operating environment: Temperature: 0°C - 40°C; Humidity: (10% - 90%) RH, non-condensing; Storage environment: Temperature: -40°C - 70°C; Humidity: (5% - 90%) RH, non-condensing.

- Keep the device away from water, fire, high electric field, high magnetic field, and inflammable and explosive items.

- Unplug this device and disconnect all cables during lightning storms or when the device is unused for long periods.

- Do not use the power adapter if its plug or cord is damaged.

- If such phenomena as smoke, abnormal sound or smell appear when you use the device, immediately stop using it and disconnect its power supply, unplug all connected cables, and contact the after-sales service personnel.

- Disassembling or modifying the device or its accessories without authorization voids the warranty, and might cause safety hazards.

Technical Support

Shenzhen Tenda Technology Co., Ltd.

Floor 6-8, Tower E3, No.1001, Zhongshanyuan Road, Nanshan District, Shenzhen, China. 518052

Website: www.tendacn.com

E-mail: support.nova@tenda.com.cn

support.de@tenda.cn

support.fr@tenda.cn

support.es@tenda.cn

support.it@tenda.cn

support.uk@tenda.cn

Copyright

© 2022 Shenzhen Tenda Technology Co., Ltd. All rights reserved.

Tenda is a registered trademark legally held by Shenzhen Tenda Technology Co., Ltd. Other brand and product names mentioned herein are trademarks or registered trademarks of their respective holders. Specifications are subject to change without notice.

